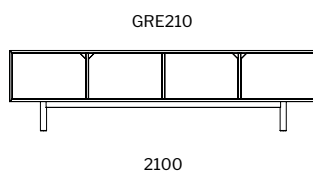
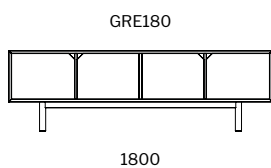
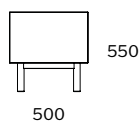
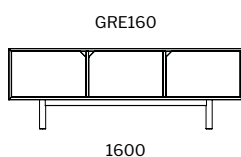


# grace ETU.



## Dimensions

### ETU



SPECIFICATION  
Structure//American Oak or  
Tasmanian Oak, 2pk Polyurethane  
painted MDF & laminated timber  
veneer w/ soft-close hinges.  
Range//Bedside Table,  
Sideboard, Entertainment Unit  
(ETU).

STAIN/UPHOLSTERY/FINISH  
Selection of timber stains//Any  
Dulux paint colour.

Click to view [Design Options!](#)

Australian Designed & Made

# timber.

---

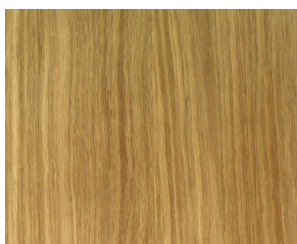
## stain guide

### AMERICAN OAK

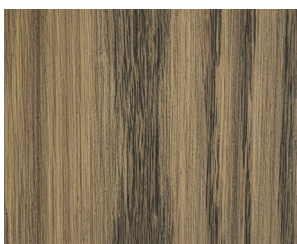
Also known as White Oak.

Appearance// Has a tight grain pattern that tends to run in a V shape. Colour is yellowish which becomes more prominent with age and light exposure. Beautiful knots & grains. Ghost Marks common. Not to be confused with European Oak.

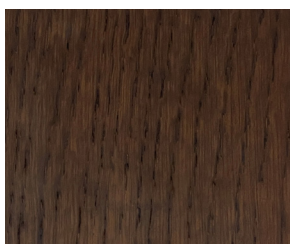
**Sustainably farmed & sourced in America.**



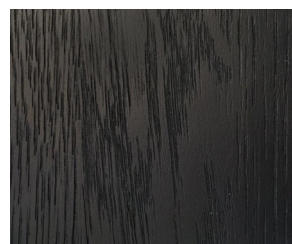
// natural



// whiskey (stain)



// walnut (stain)



// true black (stain)

---

//KEEP IT AUSTRALIAN

### TASMANIAN OAK

Also known as Victorian/Mountain Ash or Stringy Bark

Appearance// Ranges from very light to medium browns often with a pink hue. The grain tends to run straight and close through the timber.

All standard Studio Pip stains can be used on Tasmanian Oak

**Naturally grown & sourced in Australia**

---

//PREMIUM TIMBER

### AMERICAN WALNUT

Also known as Black Walnut

Appearance// Ranges from golden to a rich chocolate brown with occasional streaks of a darker purplish brown colour. Generally straight grain with curly or wavy grain pattern.

**Sustainably farmed & sourced in America.**