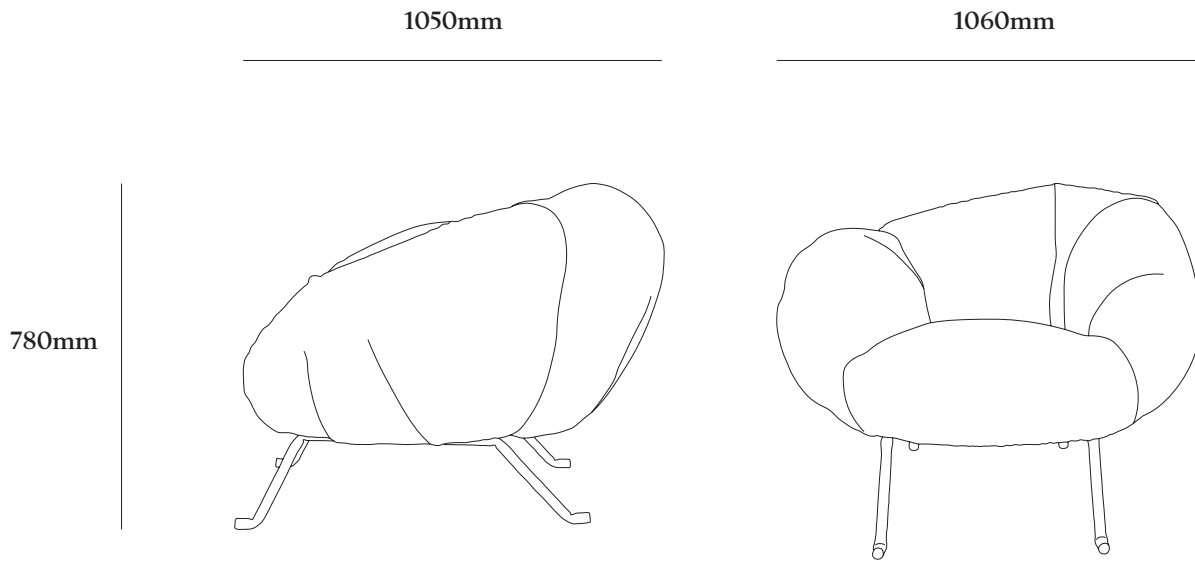


Faye Toogood



Soft Slump, metal legs

Soft Slump, metal legs



A supple, squashy, asymmetric armchair. *Soft Slump's* expressive form is created through the draping and gathering of its upholstery fabric. A sculptural chair available mounted on dimpled steel legs or industrial metal wheels.

MATERIALS	Ply, Springs, Hessian, Cocolok, Wool
DIMENSIONS	78(h) x 106(w) x 105(d) cm
WEIGHT	30kg
ORIGIN	UK
TEXTILE	4.8m plain, based on standard 140cm width fabric / 13sqm leather.

Soft Slump Chair can be upholstered in customer's own material (C.O.M) or in a fabric recommended by Faye Toogood Studio.

Please contact sales@fayetoogood.com for more information.

LEAD TIME	Made to order (10-12 week lead time)
DELIVERY	We offer UK and international delivery.

As all items are made to order, shipping costs vary according to the piece, destination and access requirements, and are quoted at the time of enquiry.

International transit typically takes 1-2 weeks by air freight, excluding any time held in customs.



Soft Slump armchair, metal legs. Barcelona, Leather, Forest



Soft Slump armchair, metal legs. Barcelona, Leather, Forest

Soft Slump, metal legs

FABRIC GUIDE



Mustard



Aqua



Espresso



Fossil



Galangal



Masala



Olive



Sumac

GIGI, WOOL SATIN



Cream



Dark Red



Forest



Marine



Magono



Mustard



Tan



Terracotta

BARCELONA, LEATHER

*Colour variations between batches may occur. Material will patina with use.

CARE GUIDANCE

Avoid hand washing and brushing.

In case of spillages, dab surface with a slightly damp cloth and dry with dry cloth.

Do not iron or use stain removal products.

Promptly treat stains. Professional cleaning is recommended.

REPAIR

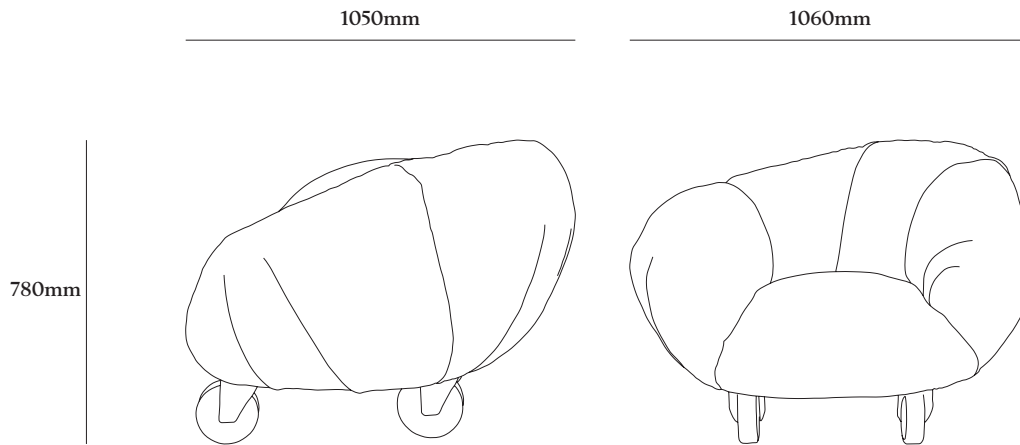
If this product is accidentally damaged, Faye Toogood Studio may be able to offer repairing/refinishing advice or services at a cost agreed upon consultation. Please email sales@fayetoogood.com with imagery, an outline of the issue and the original order number when enquiring about a repair.

Faye Toogood



Soft Slump, wheels

Soft Slump, wheels



A supple, squashy, asymmetric armchair. *Soft Slump*'s expressive form is created through the draping and gathering of its upholstery fabric. A sculptural chair available mounted on dimpled steel legs or industrial metal wheels.

MATERIALS	Ply, Springs, Hessian, Cocolok, Wool
DIMENSIONS	78(h) x 106(w) x 105(d) cm
WEIGHT	30kg
ORIGIN	UK
TEXTILE	4.8m plain, based on standard 140cm width fabric / 13sqm leather.

Soft Slump Chair can be upholstered in customer's own material or in a fabric recommended by Faye Toogood Studio.

Please contact sales@fayetoogood.com for more information.

LEAD TIME	Made to order (10-12 week lead time)
DELIVERY	We offer UK and international delivery.

As all items are made to order, shipping costs vary according to the piece, destination and access requirements, and are quoted at the time of enquiry.

International transit typically takes 1-2 weeks by air freight, excluding any time held in customs.



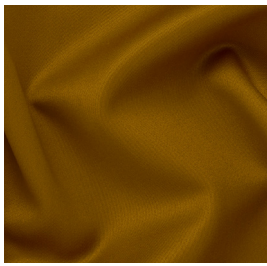
Soft Slump armchair, wheels. Barcelona, Leather, Cream



Soft Slump armchair, wheels. Barcelona, Leather, Cream

Soft Slump, wheels

FABRIC GUIDE



Mustard



Aqua



Espresso



Fossil



Galangal



Masala



Olive



Sumac

GIGI, WOOL SATIN



Cream



Dark Red



Forest



Marine



Magono



Mustard



Tan



Terracotta

BARCELONA, LEATHER

*Colour variations between batches may occur. Material will patina with use.

CARE GUIDANCE

Avoid hand washing and brushing.

In case of spillages, dab surface with a slightly damp cloth and dry with dry cloth.

Do not iron or use stain removal products.

Promptly treat stains. Professional cleaning is recommended.

REPAIR

If this product is accidentally damaged, Faye Toogood Studio may be able to offer repairing/refinishing advice or services at a cost agreed upon consultation. Please email sales@fayetoogood.com with imagery, an outline of the issue and the original order number when enquiring about a repair.