

# ASTRO CLUB CHAIR

Description:	Upholstered armchair with metal frame
Dimensions:	W:695 D:665 H:735 SH:450 SD:530
Weight:	12 kg
Packaging:	W:780 D:740 H:900, 16 kg
Pieces/box:	1 pcs/1 box



## ABOUT THE COLLECTION

The Astro Club Chair stands out with its unique steel tube rings, inspired by planetary orbits. The external frame supports a fully webbed seat that reduces foam usage while ensuring comfort, durability, and striking visual appeal in one sleek design.

"The starting point was imagining how a contemporary club chair could be. I like the idea of a generous, enveloping chair, but I wanted to make one with a lighter look and feel. Replacing large volumes of fabric and foam with an elegant tube frame seemed to be the answer to me. " – Chris Martin, Designer-in-Chief

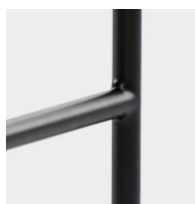
Year of release: 2025

Designer: Chris Martin

## CARE & MAINTENANCE

Maintain your upholstery by vacuuming it regularly with a soft upholstery attachment. Try to avoid placing fabric in direct sunlight, and use curtains and blinds to protect your furniture when possible. Try to avoid spot cleaning, but if necessary try blotting the spot with a paper towel or clean white cloth. Avoid rubbing as this will create a larger stain. If further care is required, please check the specific cleaning requirements of your fabric to ensure that the appropriate method is used, this will ensure no further damage and the best possible removal of any stain.

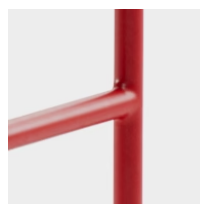
## FRAME FINISH



Black



Ivory



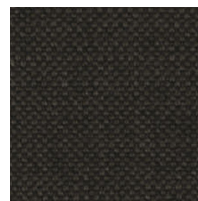
Pure Red

## FABRIC OPTIONS

Romo / Linara  
36.000 Martindale  
63% Cotton  
37% Linen



05 Porridge



90 Espresso



253 Swedish Grey

Kirkby Design / Spiral  
Recycled Weave  
Entirely made from recycled materials  
60.000 Martindale  
55% Polyester  
45% Cotton



06 Dragonfly



21 Chalk



23 Monochrome

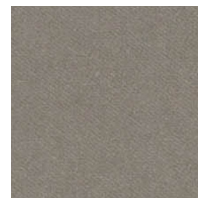
Kirkby Design / Smooth III  
Fabric Type: Velvet  
100.000 Martindale  
100% Polyester



35 Porcini



45 Pine Green



87 Gris

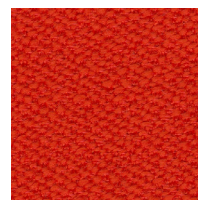
Kvadrat / Vidar 4  
100.000 Martindale  
94% New Wool  
6% Nylon



0106



0333



0542

Sahco / Ecriture  
70.000 Martindale  
40% Polyacrylic  
27% Polyester  
18% Viscose  
9% Linen  
6% Cotton



100

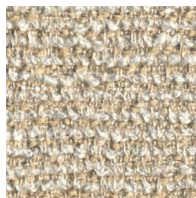


240



380

Sahco / Nalia  
50.000 Martindale  
39% Viscose  
29% Cotton  
14% Linen  
9% Polyacrylic  
7% Nylon  
2% Polyester



220

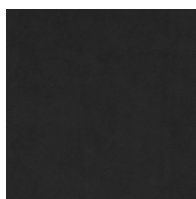


240



380

Sorensen / Dunes  
Aniline Leather  
Chrome-free  
Thickness: 1,1-1,3 mm



Anthrazite 21003



Camel 21004

Other fabric options available on request